

MAINE HOSPICE COUNCIL PALLIATIVE CARE CONFERENCE
OCTOBER 2022

Health Inequities Among LGBTQ+ Individuals: Bridging the Gap

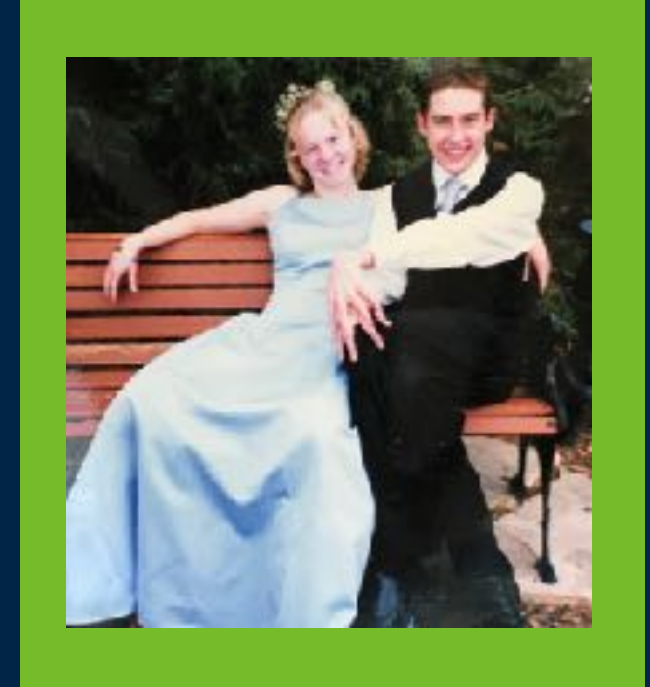
PRESENTED BY NEM KNIGHT

TODAY'S (GAY) AGENDA

- INTRODUCTIONS
- PART I: **LANGUAGE**
- PART II: **HISTORY**
- PART III: **NUMBERS**
- PART IV: **DISCUSSION**
- RESOURCES

ABOUT YOUR PRESENTER

MNEMOSYNE "NEM" KNIGHT
SHE/HER/HERS



EQUALITYMAINE

Founded in 1984, EqualityMaine, which includes SAGE Maine, works to support Maine's diverse LGBTQ+ population through community building, educational programs, and advocating for inclusive policies and laws.

ADVOCACY



EDUCATION



COMMUNITY



YEARS

EQUALITYMAINE

SAGE MAINE

SAGE Maine merged with EqualityMaine in November of 2019. It provides advocacy, services and community building for older adults in Maine.



PART I - LANGUAGE

"OUR LANGUAGE IS THE REFLECTION OF OURSELVES. A LANGUAGE IS AN EXACT REFLECTION OF THE CHARACTER AND GROWTH OF ITS SPEAKERS."

CESAR CHAVEZ

LGBTQ



Language Evolution & Mirroring

PART II - HISTORY

"PEOPLE ARE TRAPPED IN
HISTORY AND HISTORY IS
TRAPPED IN THEM."

JAMES BALDWIN

The Life of Darwin (born 1937, age 85)

OR A SUPER ABBREVIATED HISTORY OF LGBTQ+ RIGHTS

13-17 years old



32 years old



42 years old



McCarthyism Peaks
1930-1937

Stonewall Uprising
1969

Harvey Milk elected &
assassinated
1977-78

The Life of Darwin (born 1937, age 85)

OR A SUPER ABBREVIATED HISTORY OF LGBTQ+ RIGHTS

50 years old



56 years old



78 years old



ACT UP First March on Wall Street
1987

Don't Ask Don't Tell
1993

Obergefell v. Hodges
2015

PART III - MATH

"PERFECT NUMBERS, LIKE
PERFECT MEN, ARE RARE."

RENE DECARTES

How many LGBTQ+ people are there?

According to the Census Bureau's recent Household Pulse Survey, 8% of respondents identified themselves as LGBTQ+, suggesting previous surveys undercounted the population.

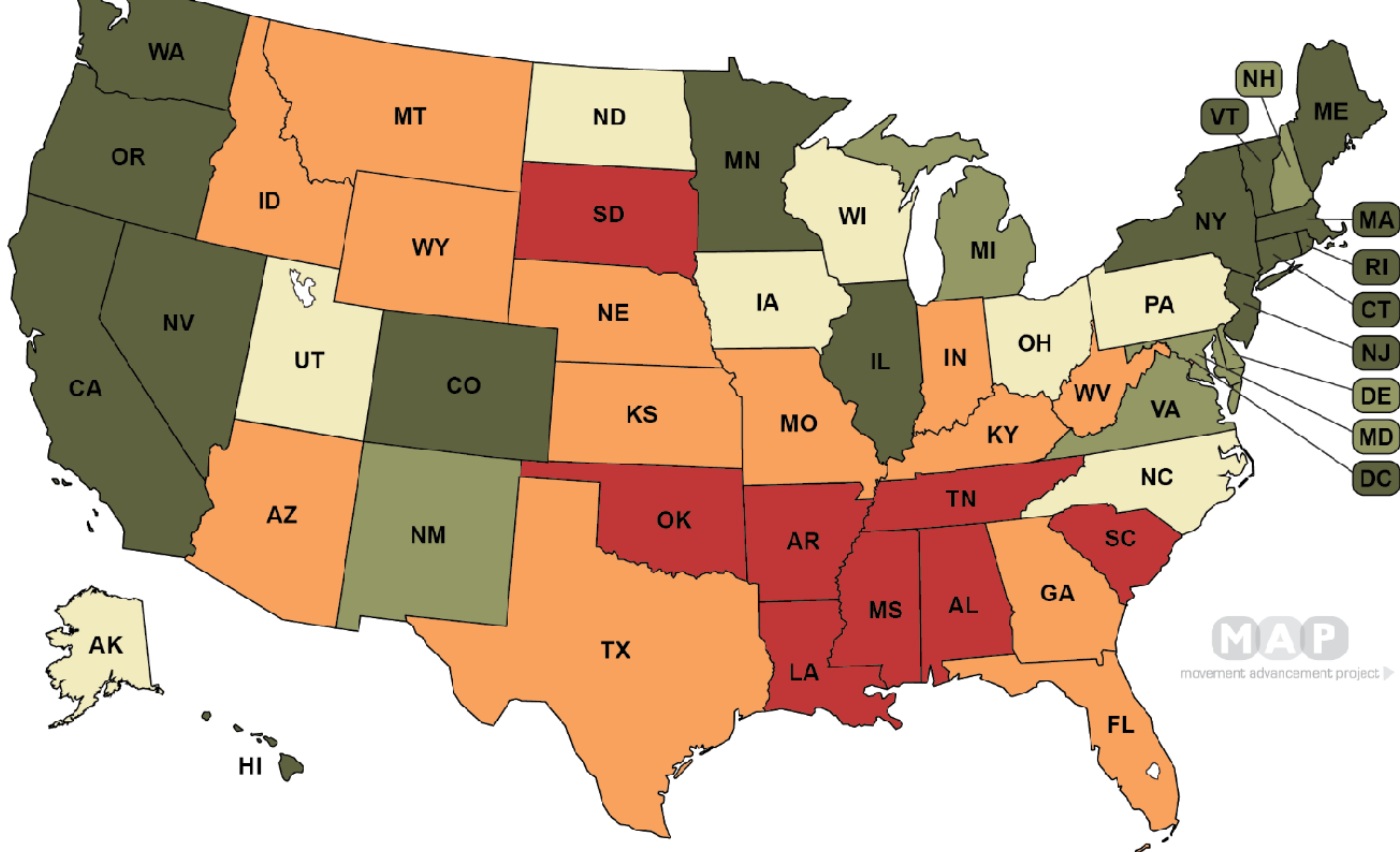
How many LGBTQ+ youth?

According to the 2019 Maine Integrated Youth Health Survey nearly 14% of high school students identify as LGBTQ+.

How many trans identified people?

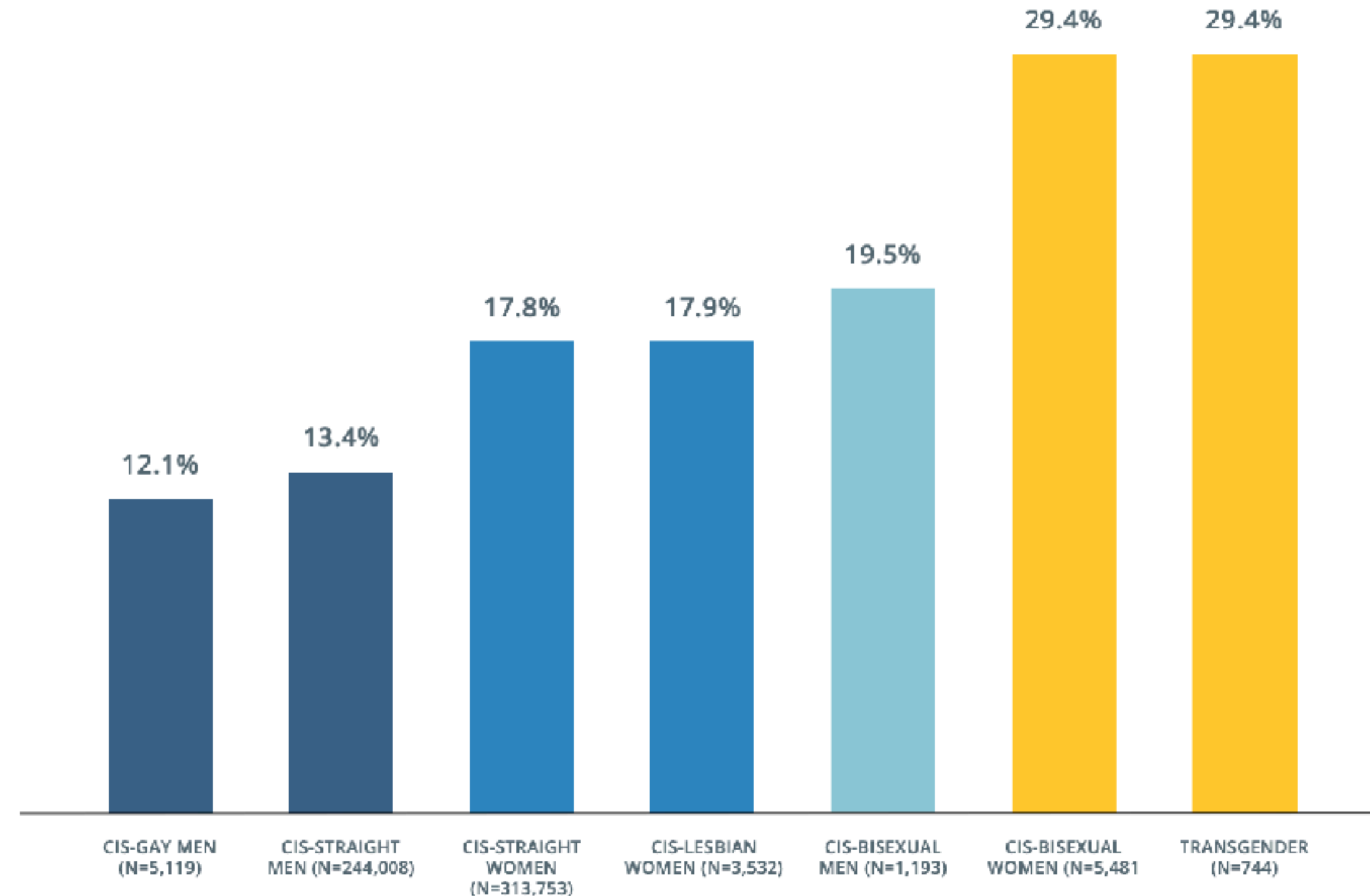
A new report from UCLA's Williams Institute says that there are now about 1.6 million people in America who identify as transgender, and about 43% of them are either teenagers or young adults.





Not all letters are created equal

Figure 2. Poverty rates by sexual orientation and gender identity^b



UCLA William Institute School of Law
LGBT Poverty In the United States – A study of differences between sexual orientation and gender identity groups
October 2019

Figure 5. LGBT poverty in the U.S. - Using the Behavioral Risk Surveillance Survey in 35 states

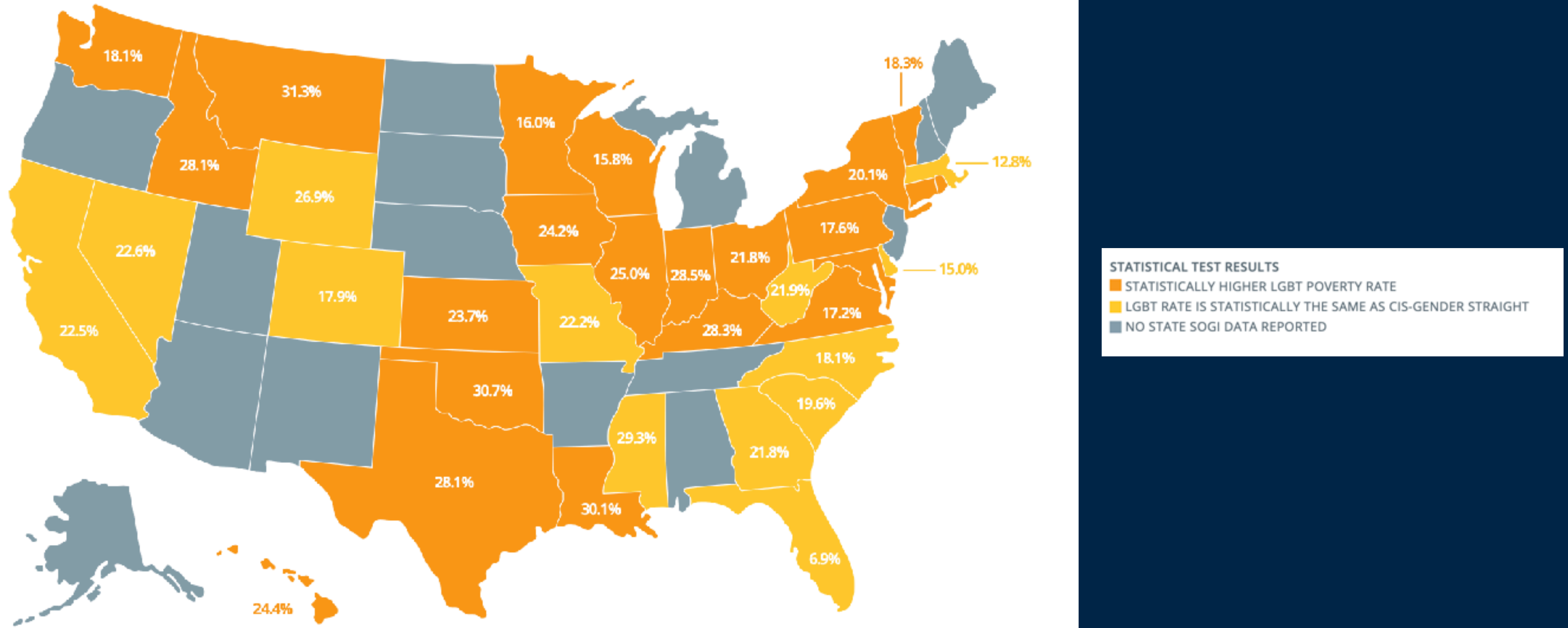


Figure 5. LGBT poverty in the U.S. - Using the Behavioral Risk Surveillance Survey in 35 states

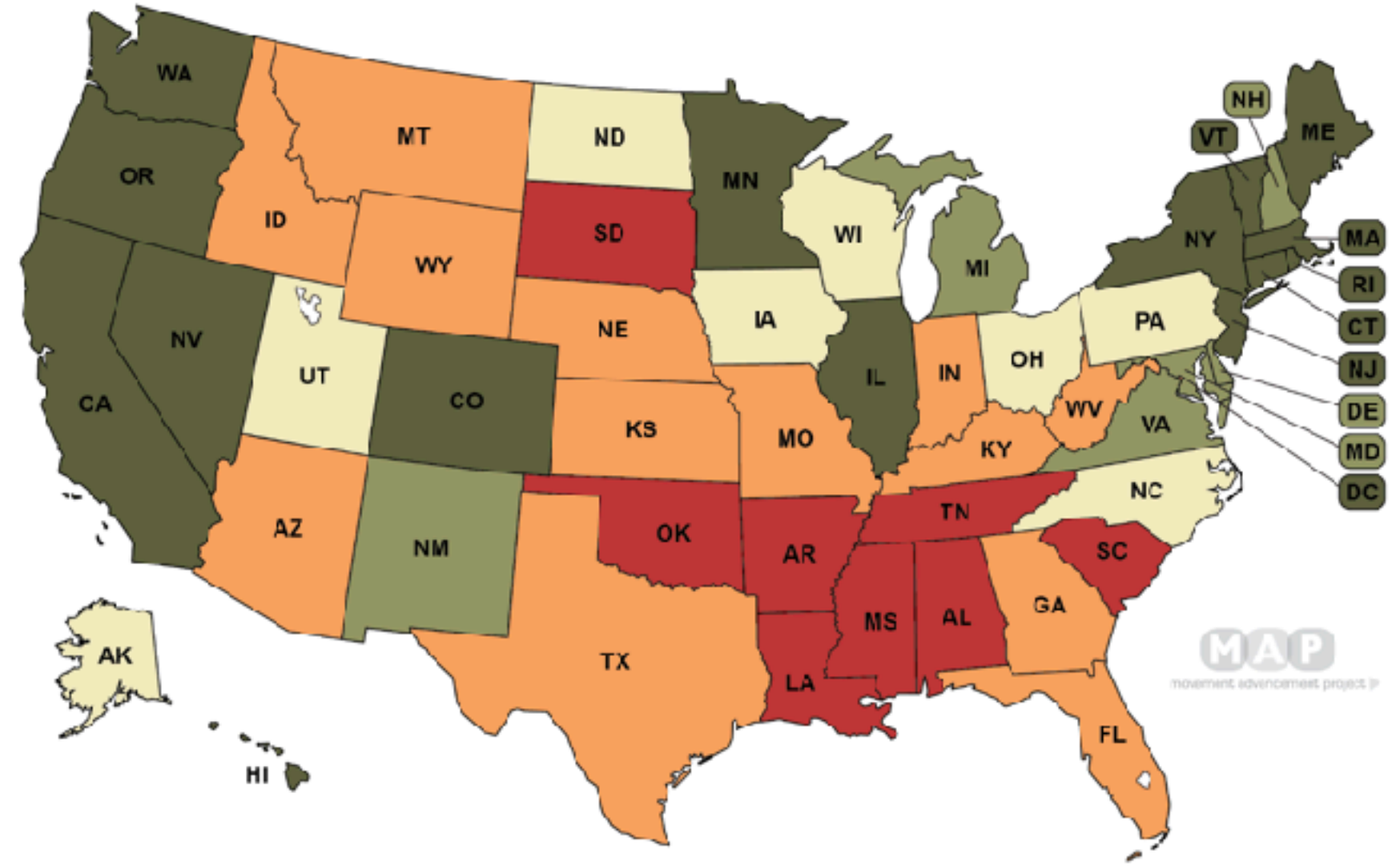
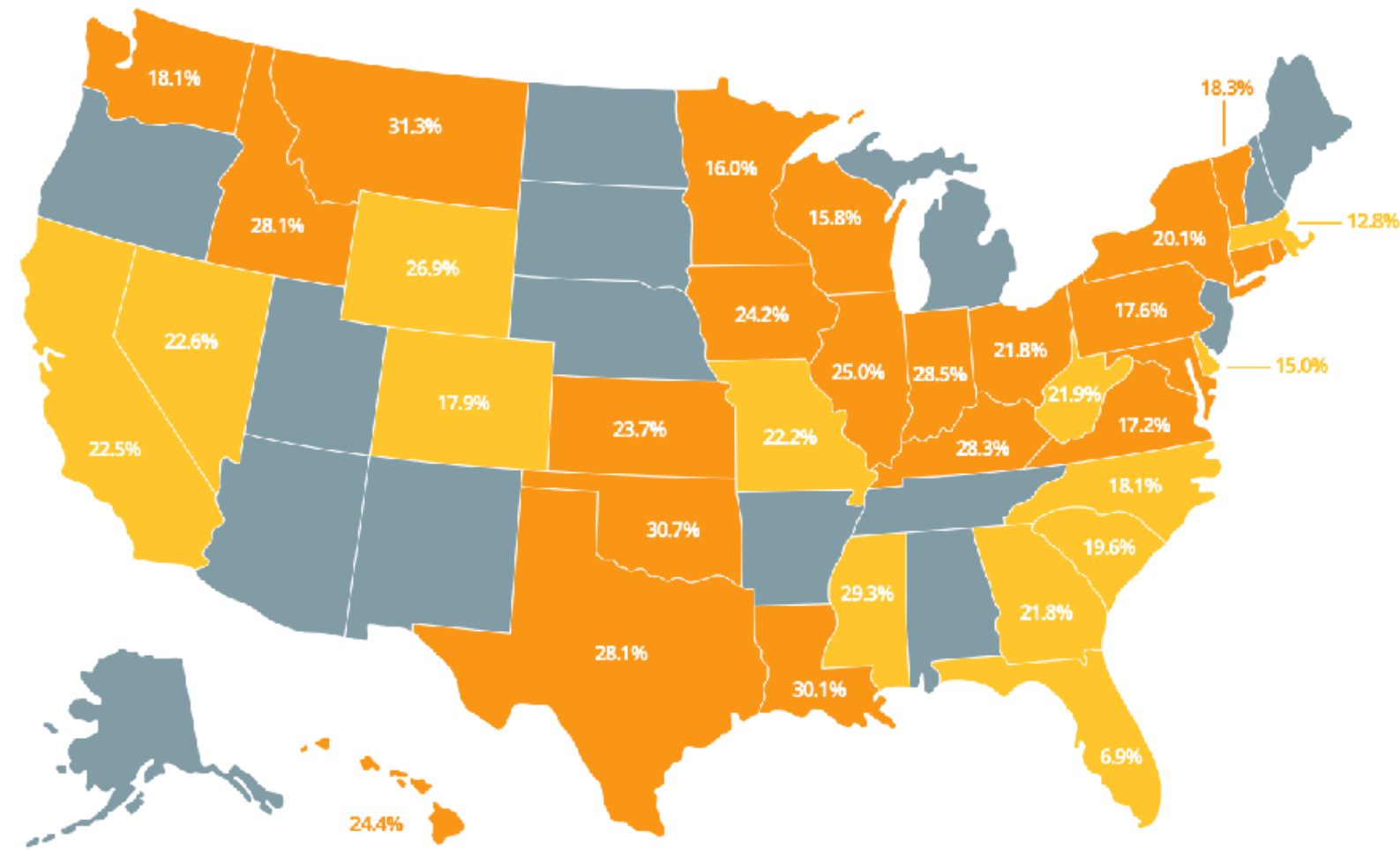
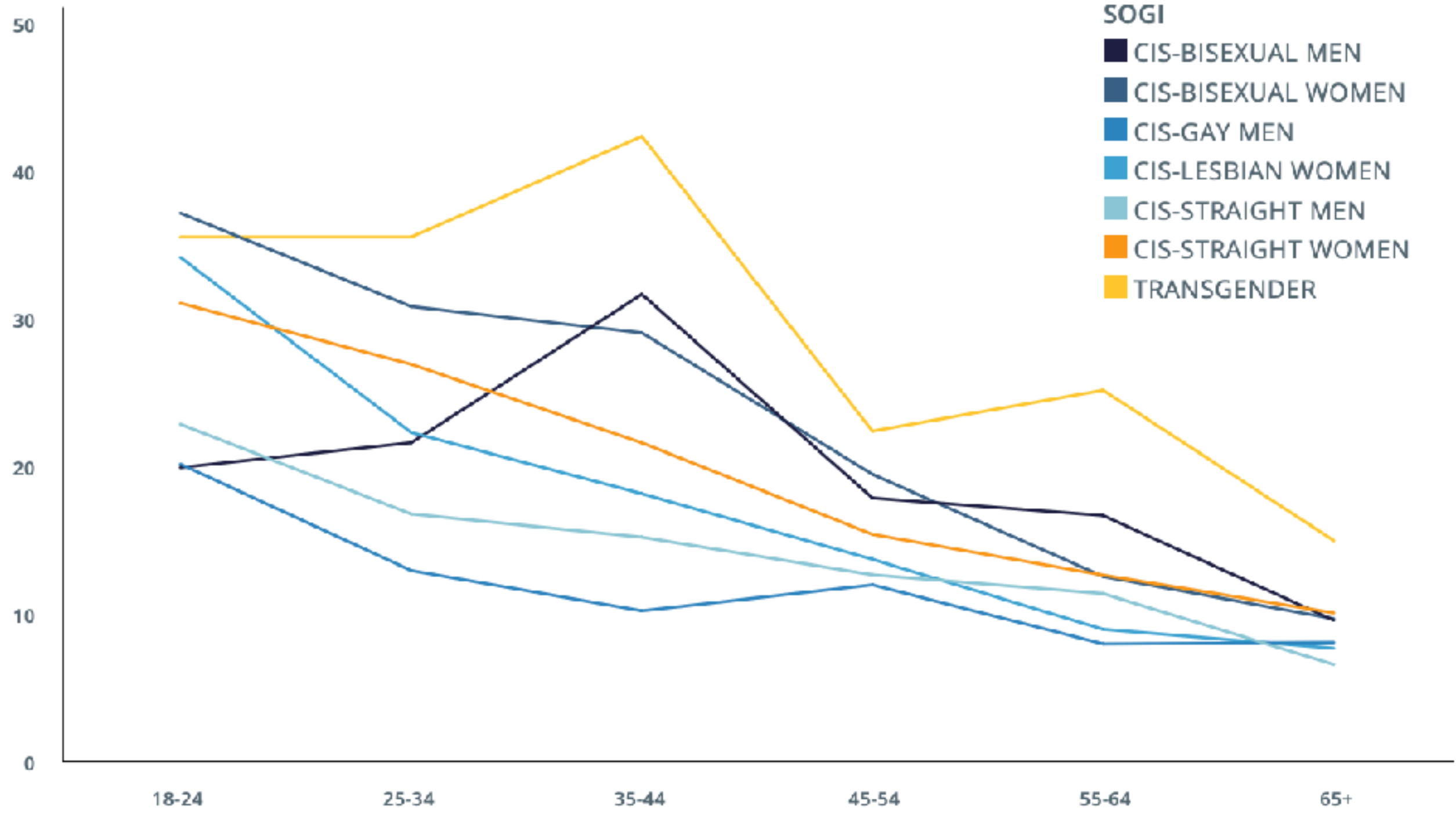


Figure 7. Poverty rates by SOGI and age





PART III - DISCUSSION

"CONVERSATION ABOUT THE
WEATHER IS THE LAST REFUGE
OF THE UNIMAGINATIVE."

OSCAR WILDE

QUESTIONS TO CONSIDER

- What are questions or conversations we as healthcare providers ask which assume a non LGBTQ+ identity?
- What was said today that you will continue thinking about after you leave? *What direct impact will this have on your work?*
- What specific challenge or scenario have you faced in your workplace? *Troubleshoot as a small group.*

LOCAL RESOURCES

The Equality Community Center
EqualityMaine & SAGE Maine
Office of the Ombudsman
Maine Council on Aging
MaineTransNet
GLAD
HEAL
Frannie Peabody Center
Planned Parenthood
Maine Family Planning
ACLU Maine
PineTree Legal
Fenway Health



Contact Info

Nem Knight (she/her)

Program Coordinator



Mailing address

EqualityMaine
PO Box 1951
Portland, ME 04104

Email address

Nem.Knight@equalitymaine.org

Phone number

207.761.3732

sage | Advocacy &
Services for
LGBT Elders

We refuse to be invisible[®]

EQME
EQUALITYMAINE